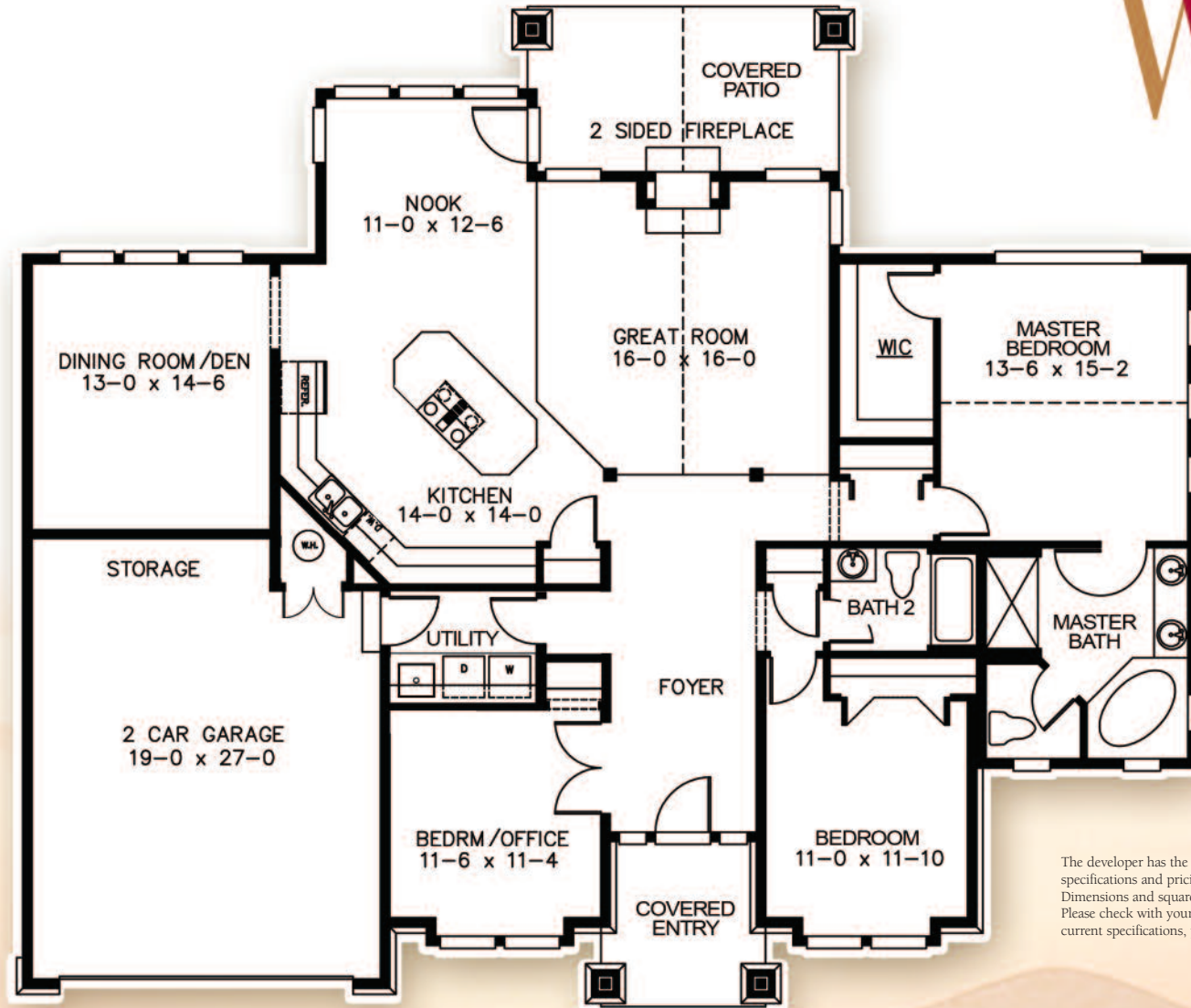


The Stoneridge *starting at* \$379,900



The developer has the right to make changes to specifications and pricing without notice. Dimensions and square footages are approximate. Please check with your sales representative for current specifications, pricing and plans.

3 Bedrooms, 2 Baths, 2 Car Garage, 1992 sq. ft.

Built so that each residence has exterior placement and maximum privacy, this one level townhome has it all. An ample 2 car garage with additional storage, a separate dining room or den, great room, three bedrooms and inviting outdoor living space with a double sided fireplace make this a truly special offering. Most all of our premium choices are included features so that all you have to do is pick your color choices and move in.

Contact us today for information:

Sales Office: (828) 684-7140

www.thevillageatwindstone.com